

# Academic Excellence Indicator System (AEIS) Report

2006 Accountability Rating:  
Academically Acceptable

Longview ISD  
2005-2006

Presented by Dr. Charlotte Parramore

# AEIS ACCOUNTABILITY SYSTEM

- Information on performance of students in each school and district
- Data gathered through PEIMS
- Generates reports from subsets of data
  - AEIS reports (1990-91)
  - Accountability Ratings (1994)
  - School report cards (1997)
- Requires public reporting of data

# AEIS PERFORMANCE INDICATORS

- TAKS and SDAA performance by grade, subject
- Student Success Initiative
- Attendance rate
- Annual Dropout rate
- Completion and dropout rates (4-year)
- Advanced courses, Rec. HS Program, AP/IB results, SAT/ACT exams - participation and results

# Changes in AEIS System from 2005 to 2006

- Increased rigor of standards on TAKS for Academically Acceptable rating
- Multi-Year History
- Increased rigor of underreported students indicator
- Panel Recommendation phased in for all subjects/grades on TAKS;
- Use of Completion Rate I, which does not count GED recipients as completers;
- Additional Required Improvement opportunities for SDAA II;
- TAAS/TASP Equivalency indicator replaced with the Texas Success Initiative (TSI) – Higher Ed Readiness Component Gold Performance indicator

# New AEIS PERFORMANCE INDICATORS

- TAKS/ /SDAA II / TAKS-I Participation
- Progress of Prior Year TAKS Failers
- Student Success Initiative
  - Grade 3 and Grade 5
  - TAKS Failers Promoted by Grade Placement
- Texas Success Initiative (TSI) – Higher Education Readiness Component
  - ELA / Math only Grade 11

# 2005-2006 AEIS REPORT

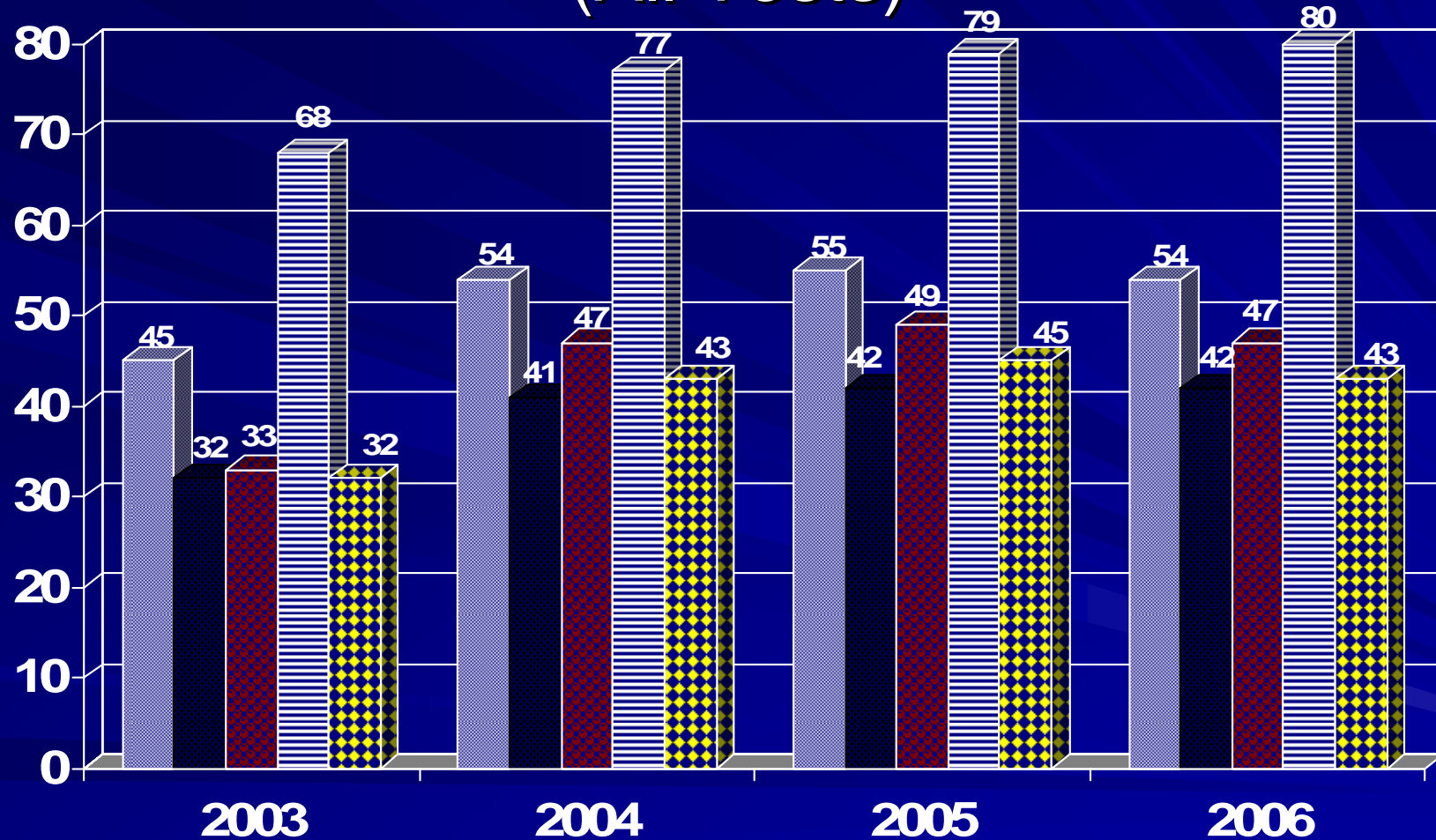
- District student performance data disaggregated by group
- Compares performance of district with state and Region VII Performance
- Descriptive and demographic information concerning students, staff, finances, and programs

# Accountability Comparison 2004-2007

	<i>2004-05</i>	<i>2005-2006</i>	<i>2006-2007</i>
<i>Exemplary</i>	<i>90</i>	<i>90</i>	<i>90</i>
<i>Recognized</i>	<i>70</i>	<i>70</i>	<i>75</i>
<b>Acceptable</b>			
R / ELA /W/ SS	50	60	65
Math	35	40	45
Science	25	35	40
SDAA II	50	50	N/A
Completion Rate	<b>Graduate + Cont. Students + GED</b>	<b>Graduate + Cont. Students</b>	<b>Graduate + Cont. Students</b>
<i>Exemplary</i>	95	95	95
<i>Recognized</i>	85	85	85
<i>Acceptable</i>	75	75	75
Annual dropout Rate	2%	1%	1%



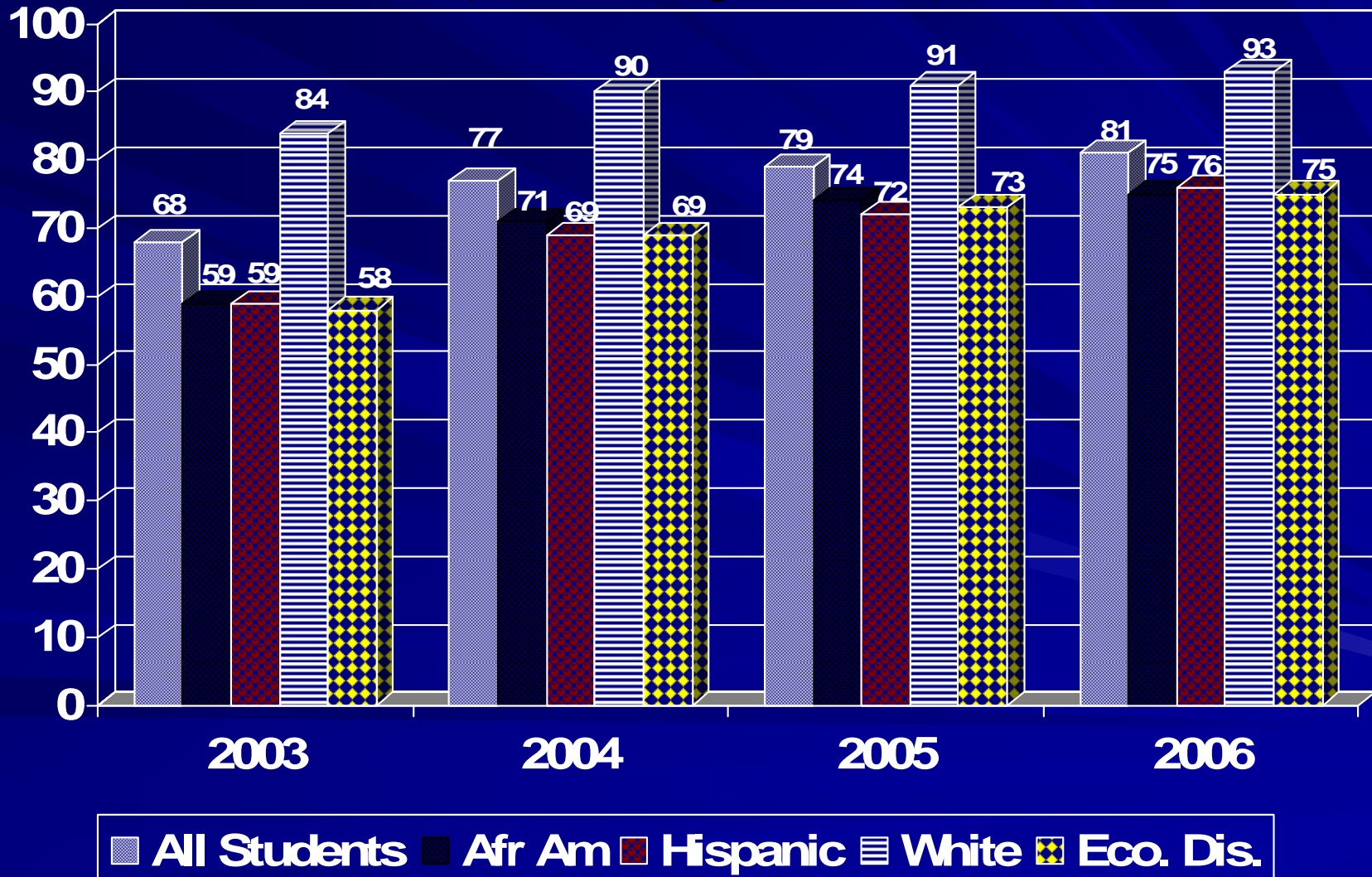
# AEIS District Data Multi-Year History 2003-2006 (All Tests)



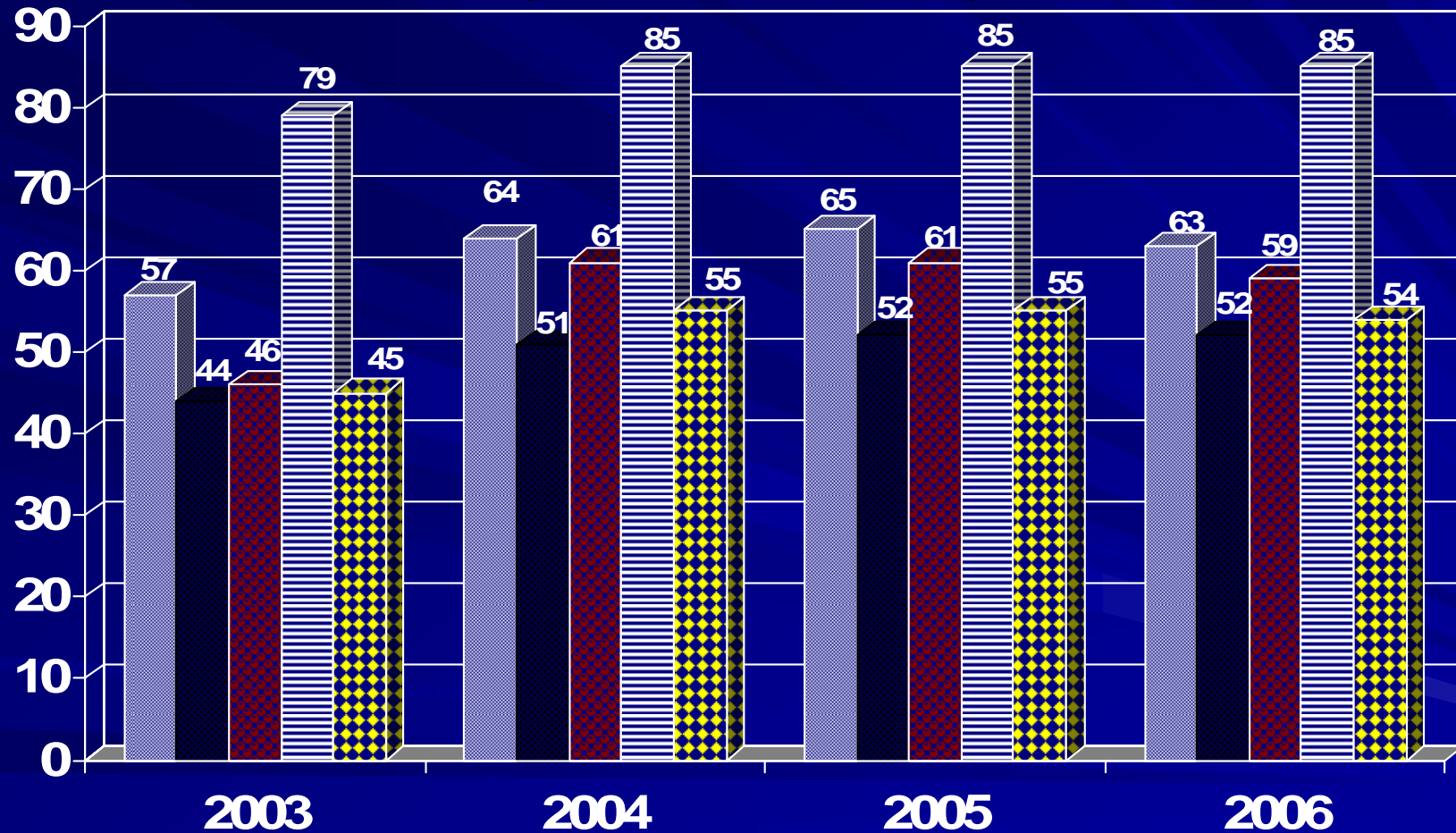
■ All Students ■ Afr Am ■ Hispanic ■ White ■ Eco. Dis.



# AEIS District Data Multi-Year History 2003-2006 (Reading / ELA)

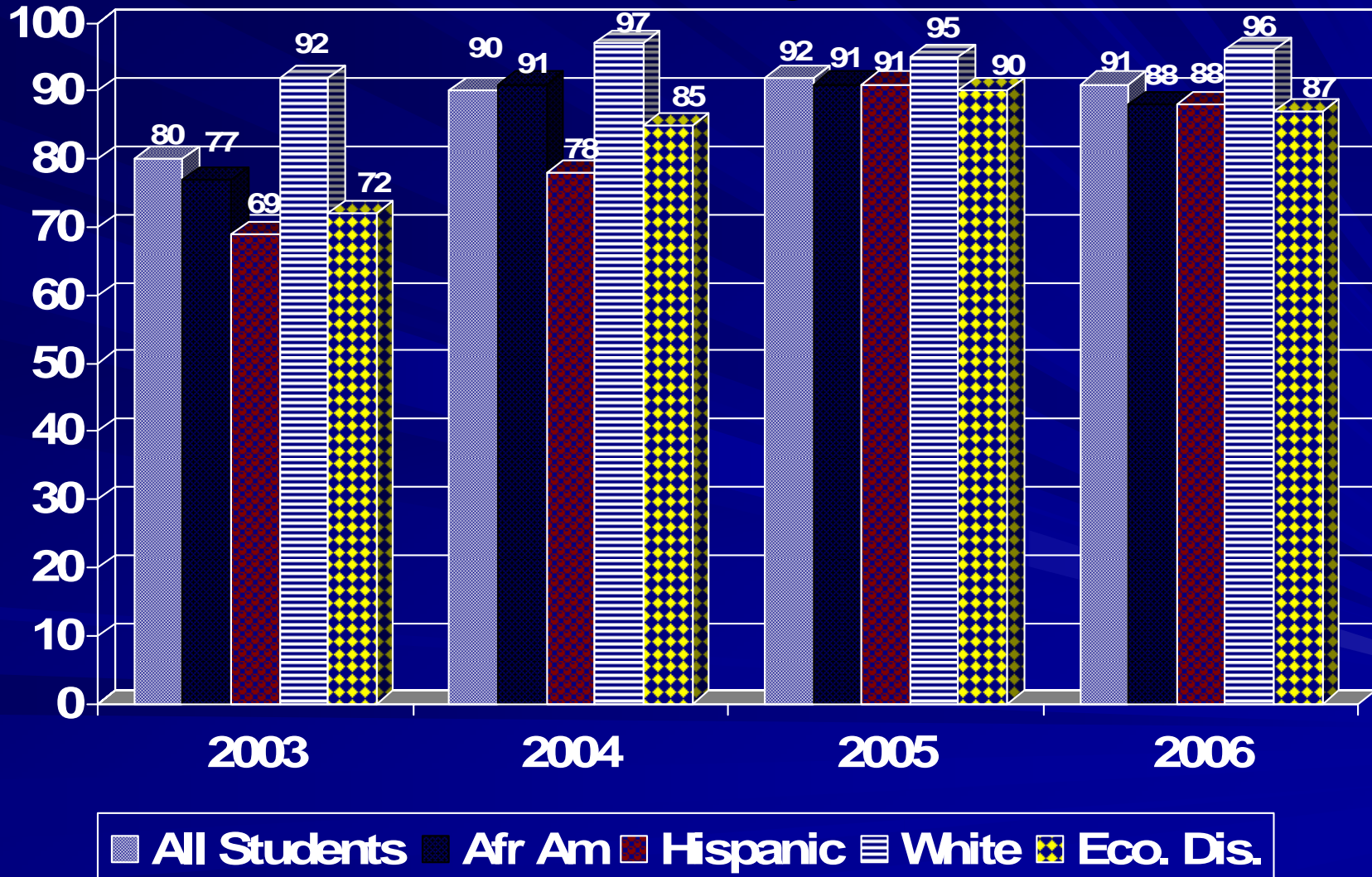


# AEIS District Data Multi-Year History 2003-2006 (Mathematics)

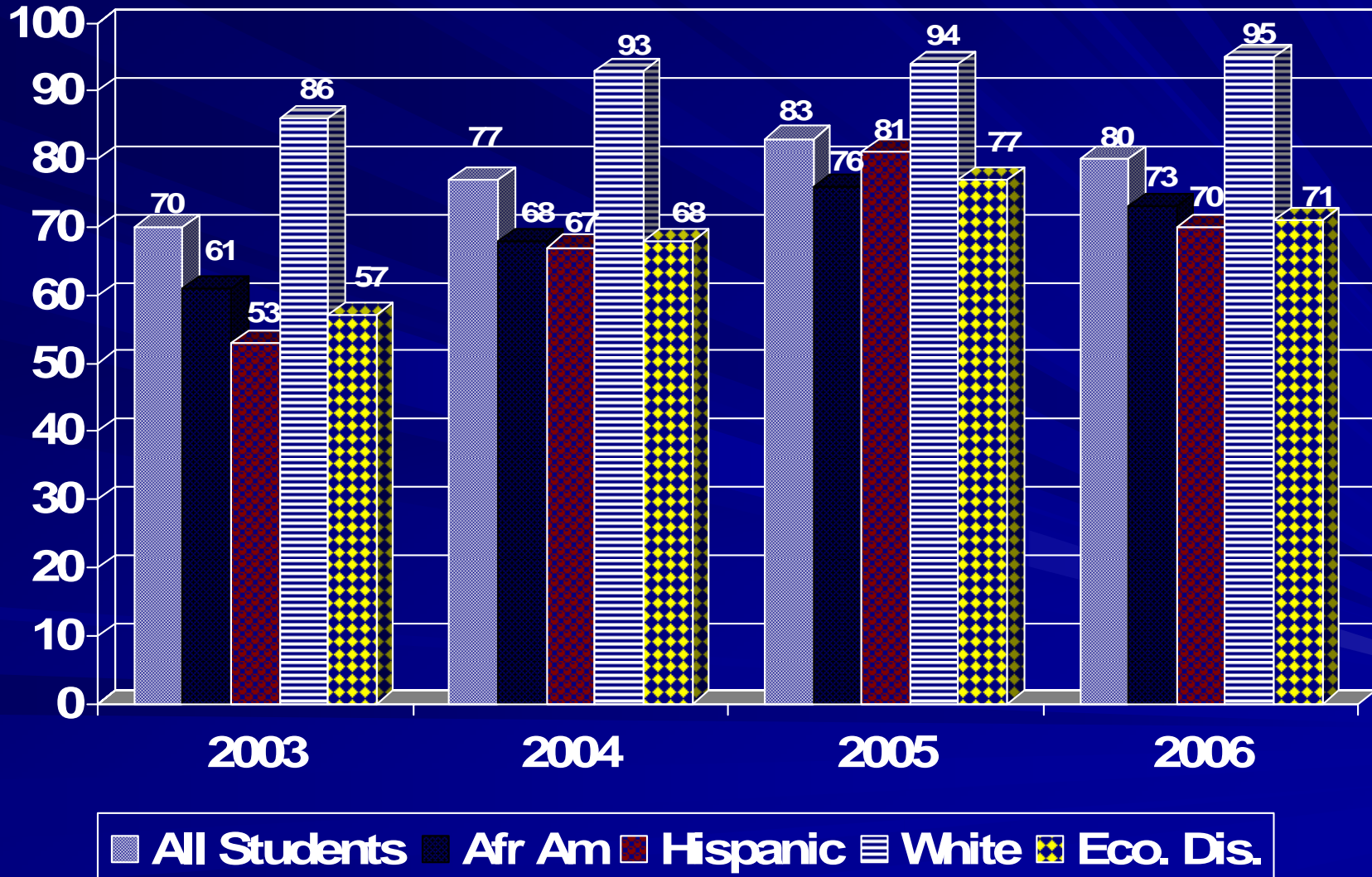


■ All Students ■ Afr Am ■ Hispanic ■ White ■ Eco. Dis.

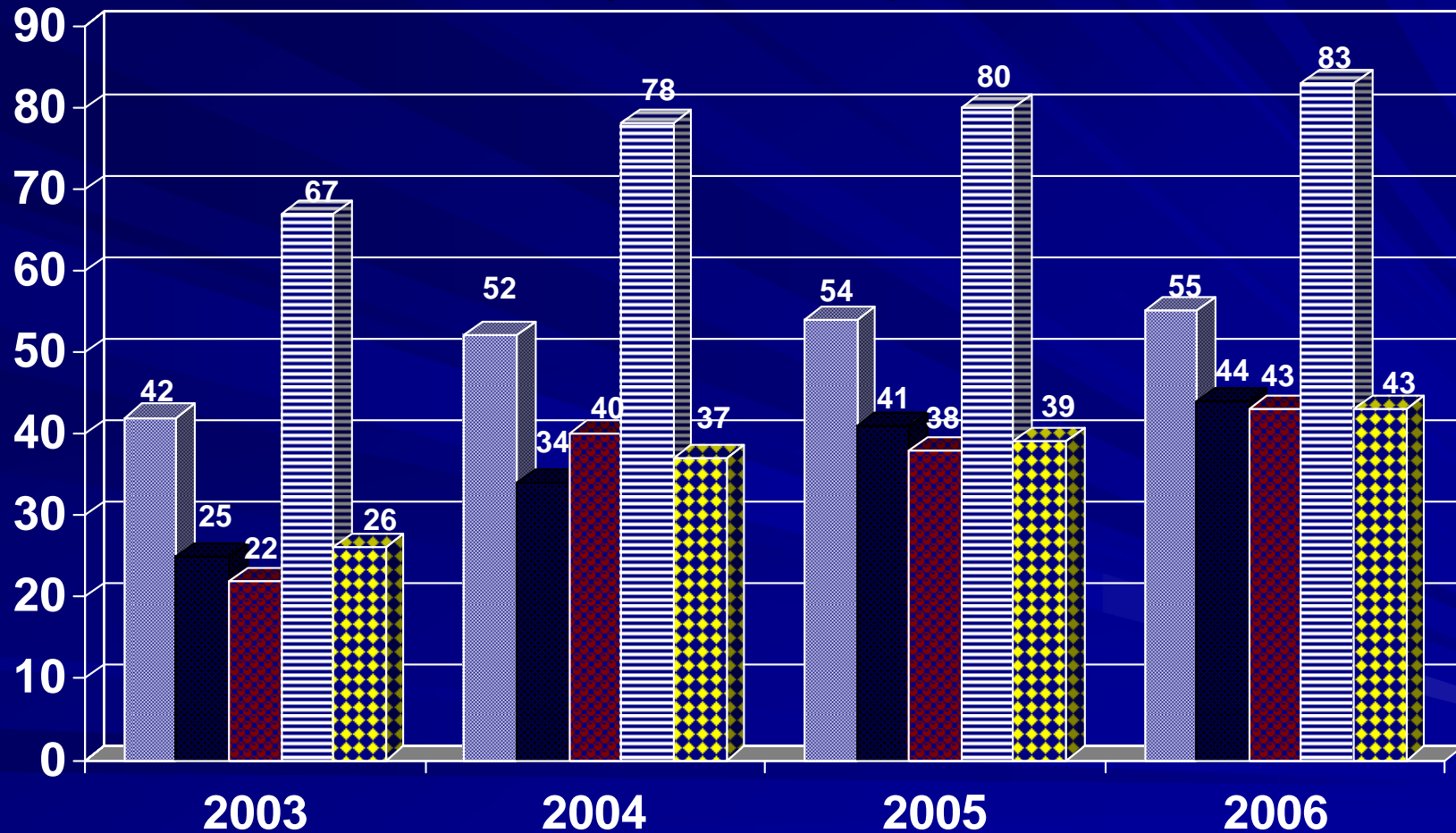
# AEIS District Data Multi-Year History 2003-2006 (Writing)



# AEIS District Data Multi-Year History 2003-2006 (Social Studies)



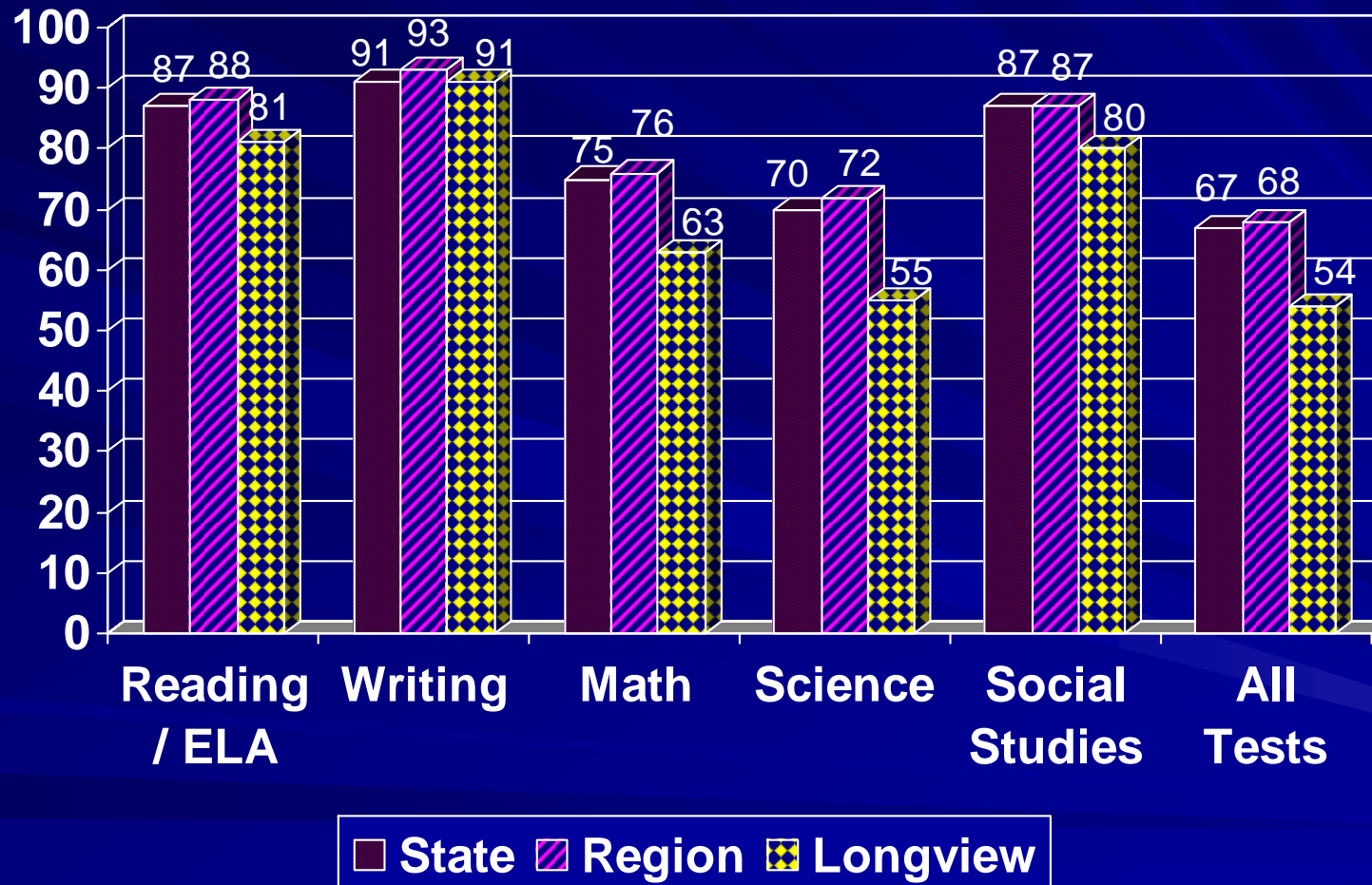
# AEIS District Data Multi-Year History 2003-2006 (Science)



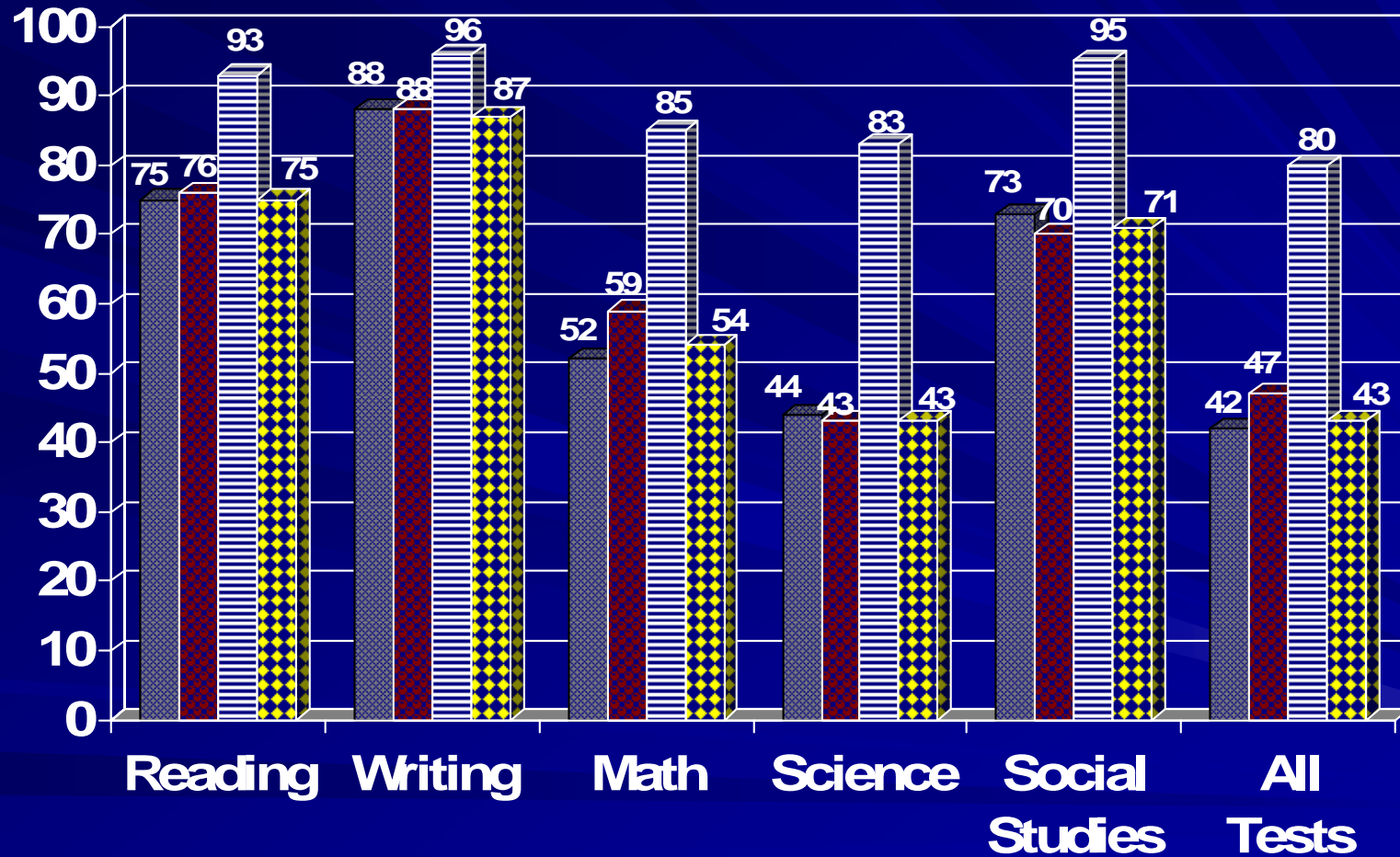
■ All Students ■ Afr Am ■ Hispanic ■ White ■ Eco. Dis.



# COMPARISON OF STATE, REGION, AND DISTRICT DATA, 2005-2006



# District Performance by Ethnicity, 2005-2006



■ Afr. Am ■ Hispanic ■ White ■ Eco. Dis.



# Campus Accountability Ratings 2004-2006

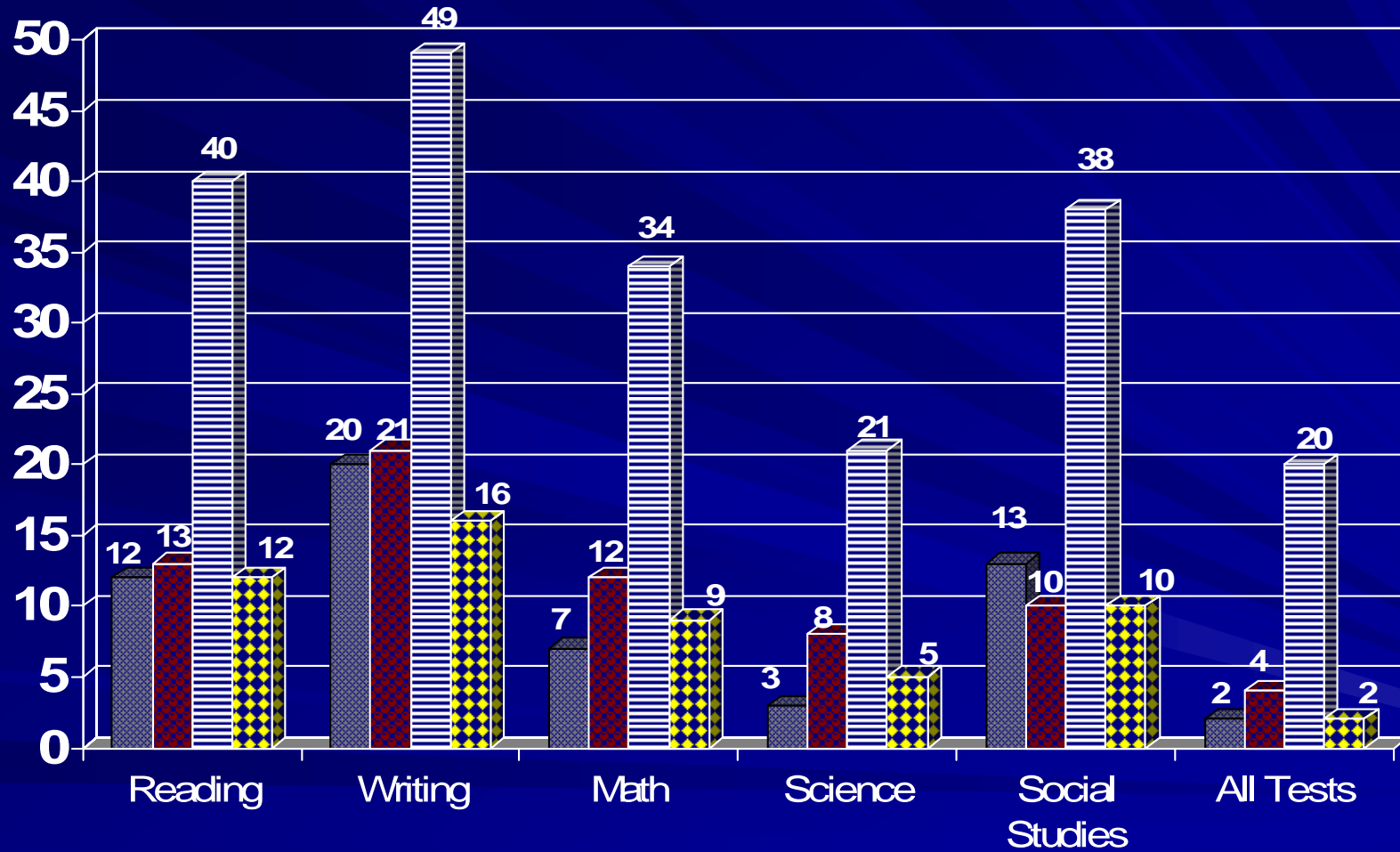
<i>Campus</i>	<i>Rating 2004</i>	<i>Rating 2005</i>	<i>Rating 2006</i>
Longview High School	Acad. Acceptable	Acad. Acceptable	Acad. Acceptable*
Forest Park Middle School	Acad. Acceptable	Acad. Acceptable	Acad. Acceptable
Foster Middle School	Acad. Acceptable	Acad. Acceptable	Acad. Acceptable
Judson Middle School	Acad. Acceptable	Acad. Acceptable	Acad. Acceptable
Bramlette	Acad. Acceptable	Acad. Acceptable	Acad. Acceptable
JL Everhart	Acad. Acceptable	Acad. Acceptable	Acad. Unacceptable
Johnston	Recognized	Acad. Acceptable	Recognized
McClure	Acad. Acceptable	Acad. Acceptable	Acad. Unacceptable
Doris McQueen	Recognized	Acad. Acceptable	Recognized
Pinewood Park	Acad. Acceptable	Acad. Acceptable	Acad. Acceptable*
South Ward	Acad. Acceptable	Acad. Acceptable	Acad. Acceptable*
Valley View	Recognized	Acad. Acceptable	Recognized
Ware	Recognized	Acad. Acceptable	Acad. Acceptable
GK Foster	Acad. Acceptable	Acad. Acceptable	Not Rated – Other
Hudson	Exemplary	Exemplary	Exemplary
Student Development Center	Not Rated - Other	Acad. Acceptable	Not Rated – Other
Juvenile Detention	Not Rated - Other	Not Rated – Other	Not Rated – Other
<b>Total Count</b>	<b>18 Campuses</b>	<b>17 Campuses</b>	<b>16 Campuses</b>

\*Rated Acad. Acceptable based on *Required Improvement* or *The Exceptions Provision*

# Gold Performance Acknowledgments

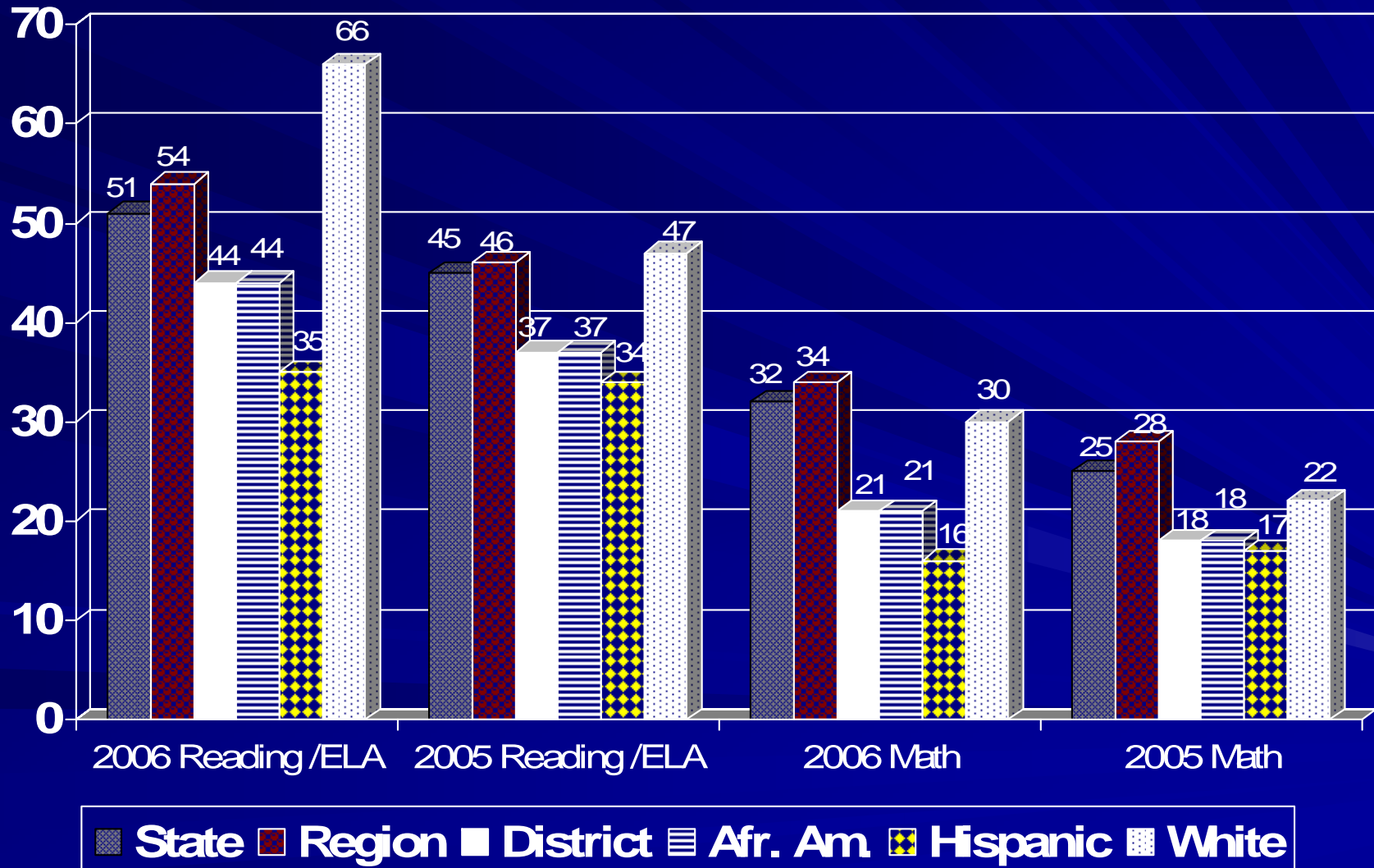
Longview ISD	2003-2004	2004-2005	2005-2006
Longview High School			
Forest Park Middle			
Foster Middle	Attendance 2002-03	2003-04 Attendance	
Judson Middle		Reading Comparable Improvement Reading/ELA	Writing Comparable Improvement – Math
Bramlette		Comparable Improvement Math	
Hudson	Attendance 2002-03 Reading Mathematics Writing Science	Attendance 2003-04 Reading Mathematics Writing Science	Attendance 2004-05 Reading Mathematics Writing Science
Johnston	Writing Science	Science	Science
McQueen Primary		Not Rated	Not Rated
McClure			
JL Everhart Primary		Not Rated	
GK Foster Primary		Not Rated	Not Rated
Pinewood Park		2003-04 Attendance Writing	
South Ward		2003-04 Attendance Comparable Improvement Reading/ELA	2004-05 Attendance
Valley View	Reading	Comparable Improvement Math	Writing Comparable Improvement Math
Ware	Reading		

# Student Commended Performance Comparison by Ethnicity

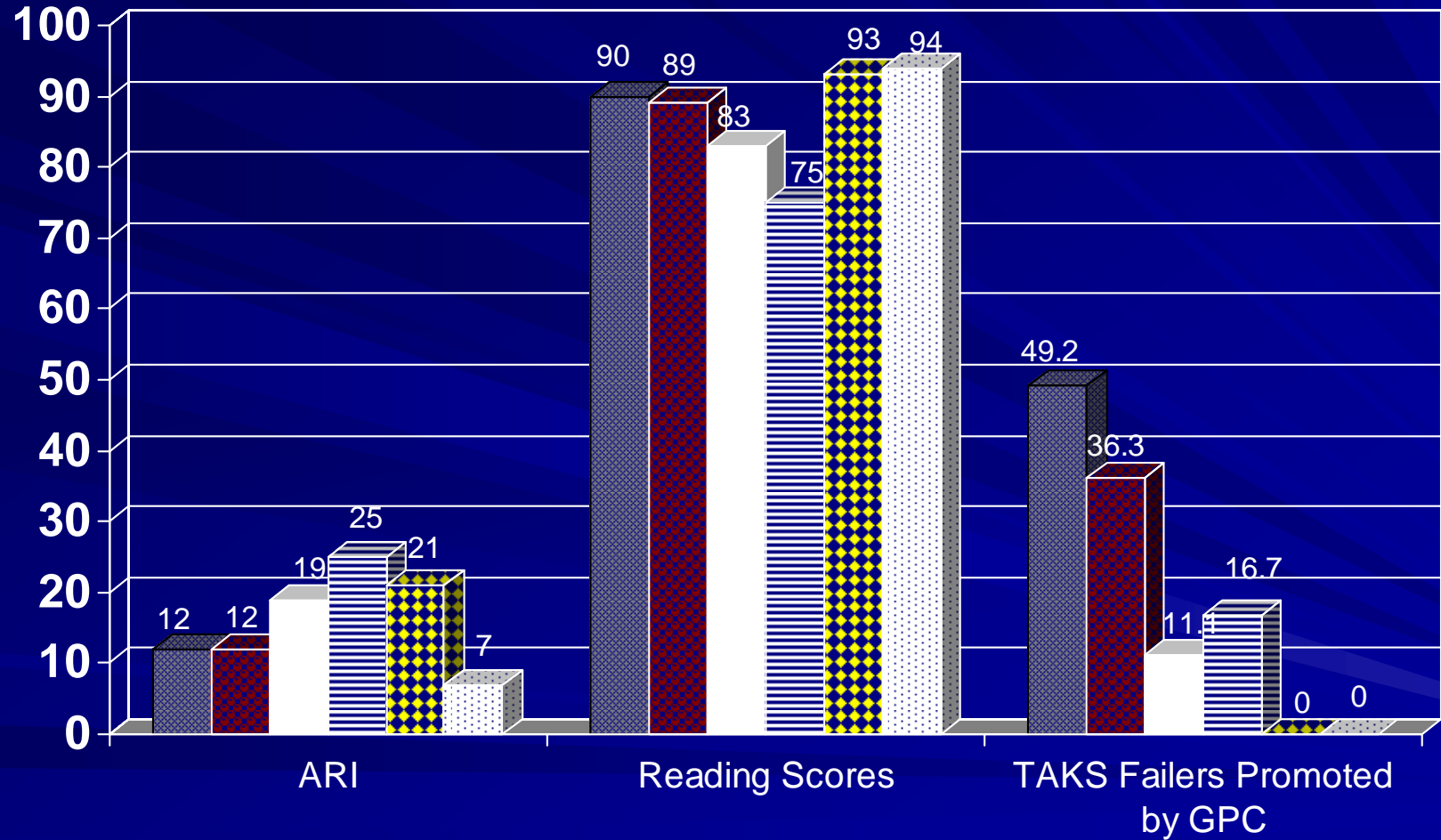


■ Afr. Am. ■ Hispanic ■ White ■ Eco. Dis.

# Progress of Prior Year TAKS Failers Sum of Grades 4-11 Percent of Failers Passing TAKS

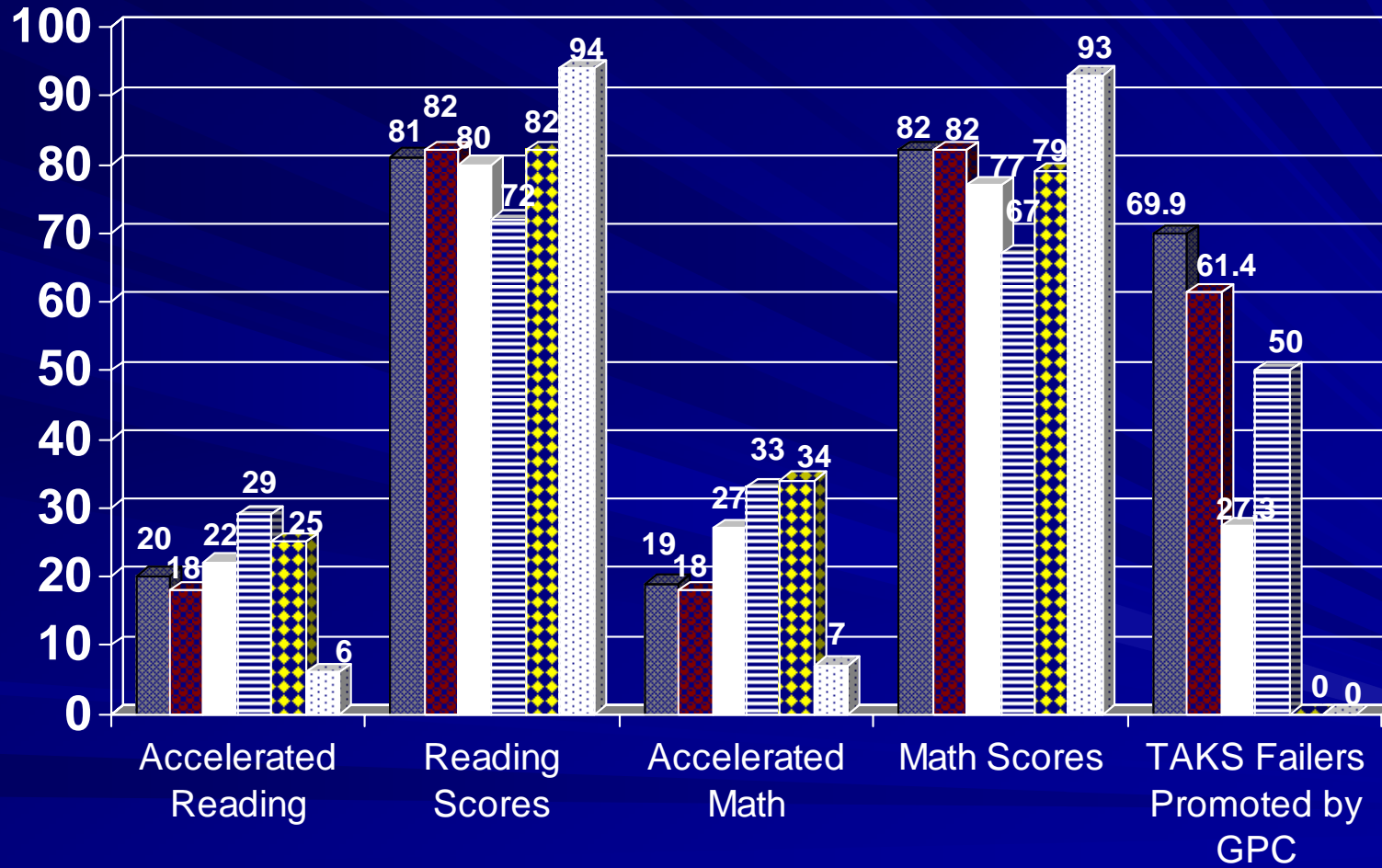


# Student Success Initiative Grade 3



State
  Region
  District
  Afr. Am.
  Hispanic
  White

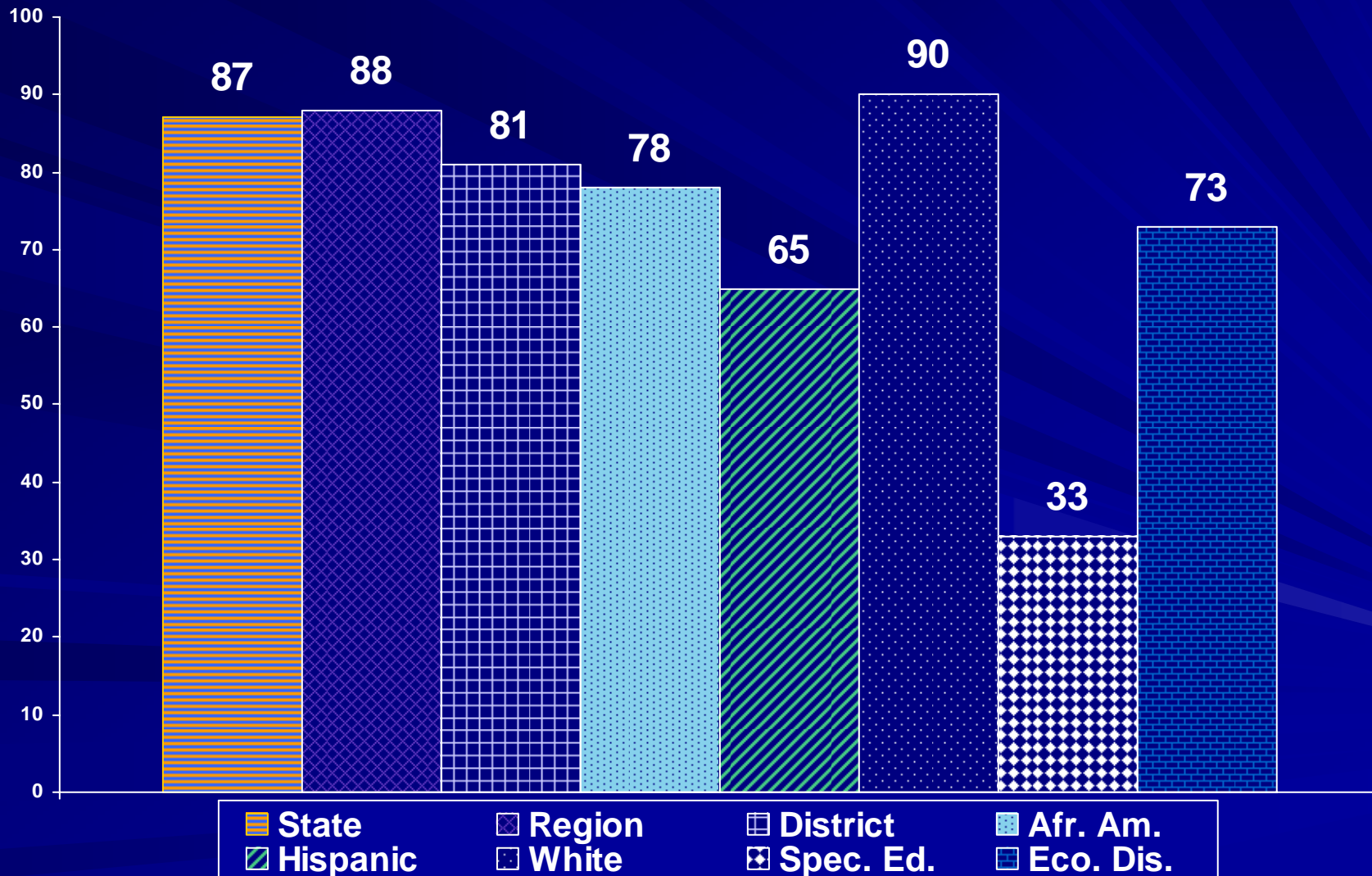
# Student Success Initiative Grade 5



State
  Region
  District
  Afr. Am.
  Hispanic
  White

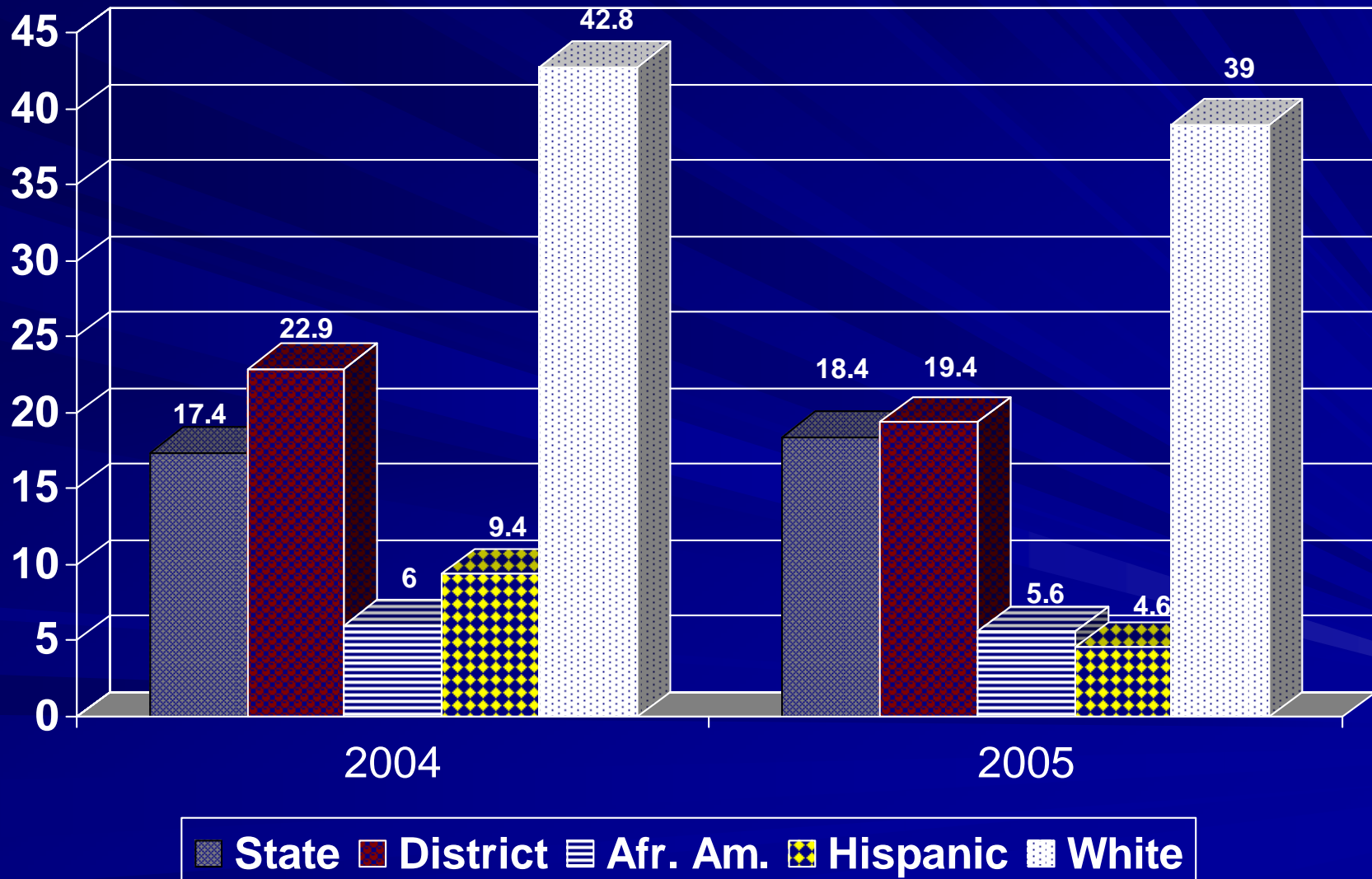


# 2005 TAKS Exit-Level Cumulative Pass Rate

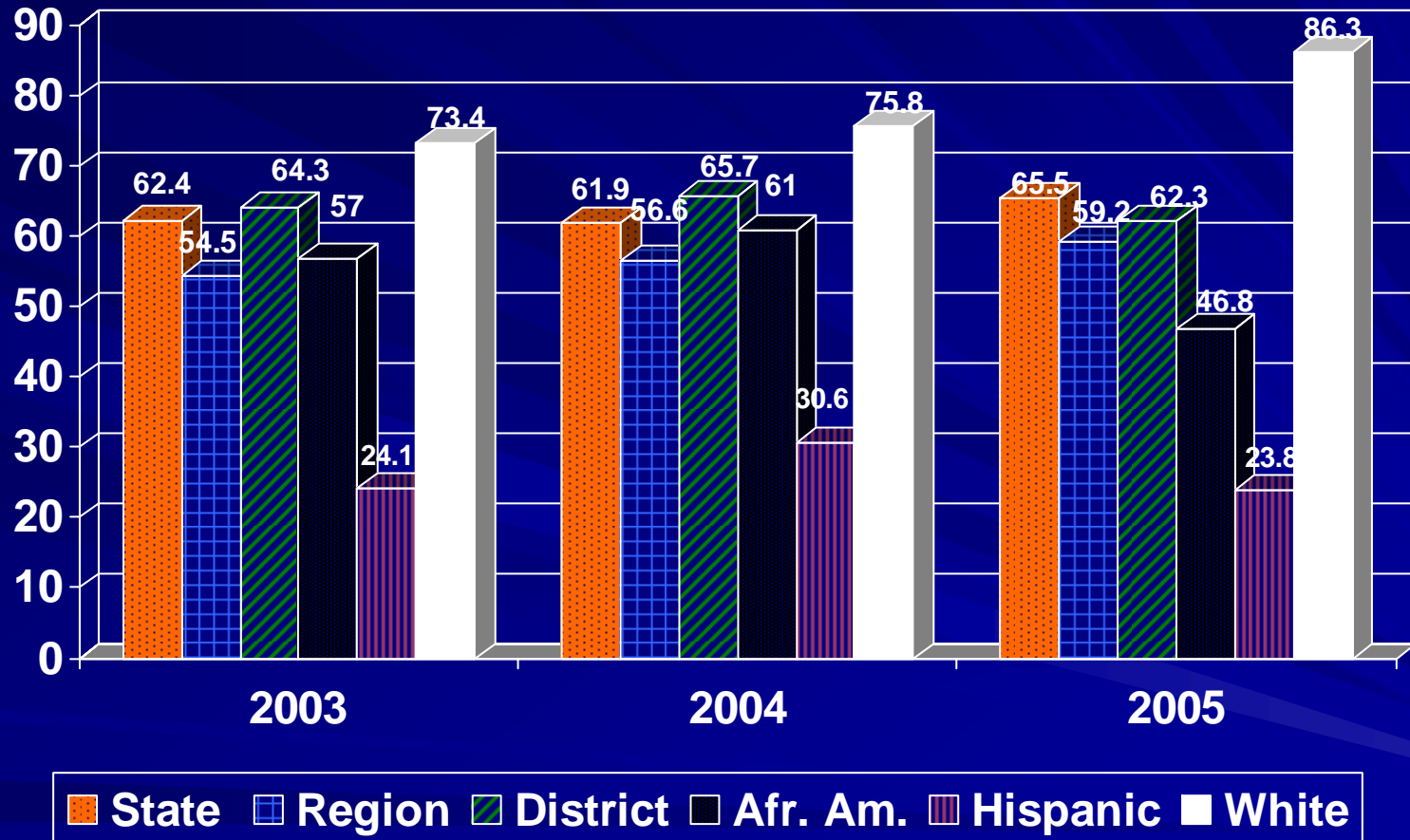




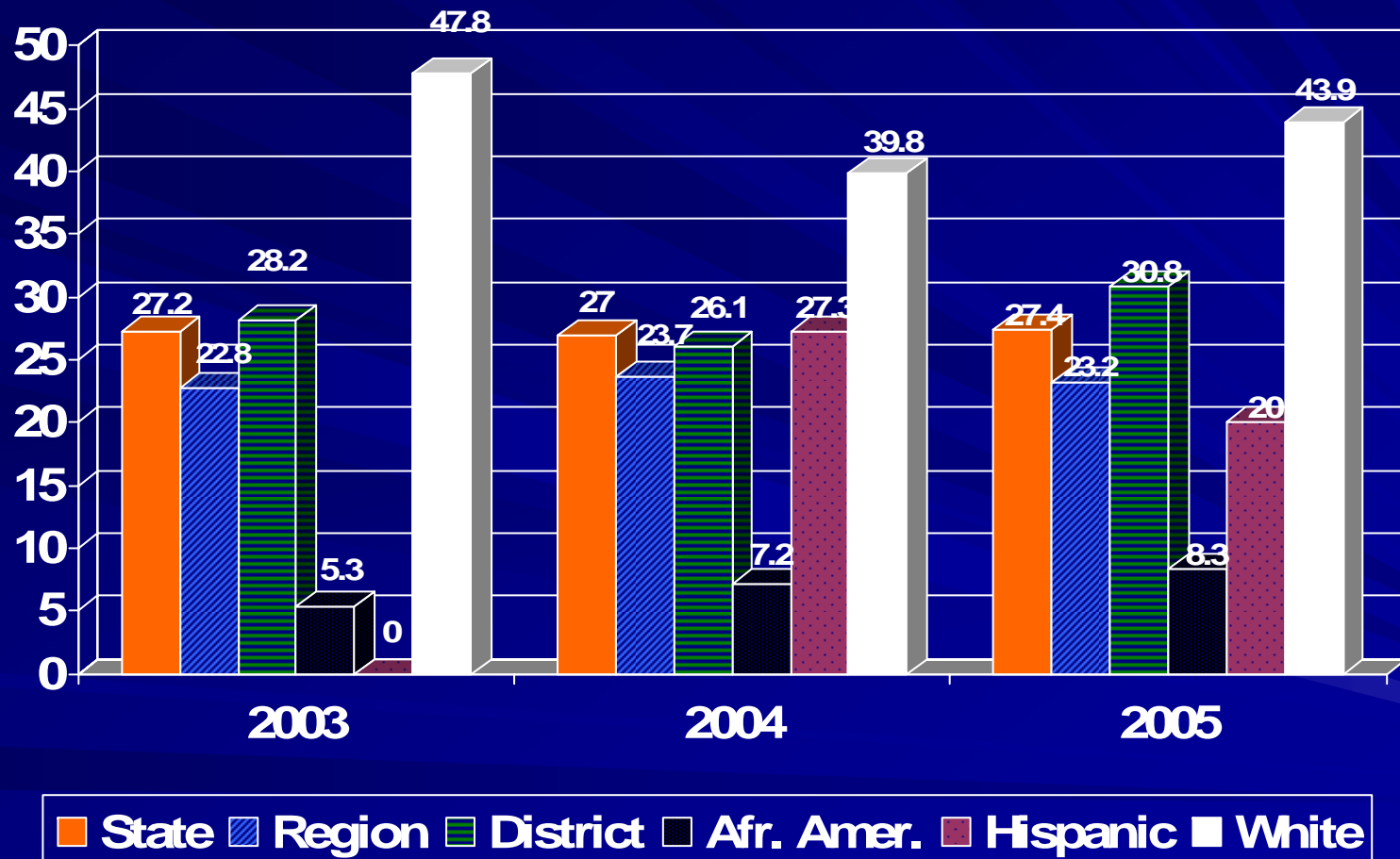
# Comparison of AP Participation By Ethnicity



# Percentage of Students Tested on SAT / ACT

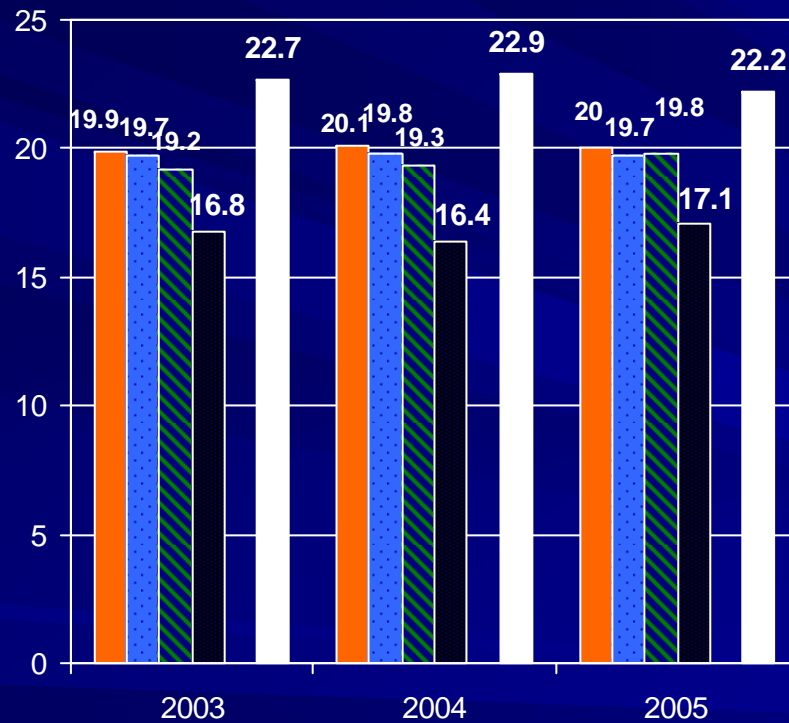


# SAT / ACT Percentage of Students At or Above Criterion



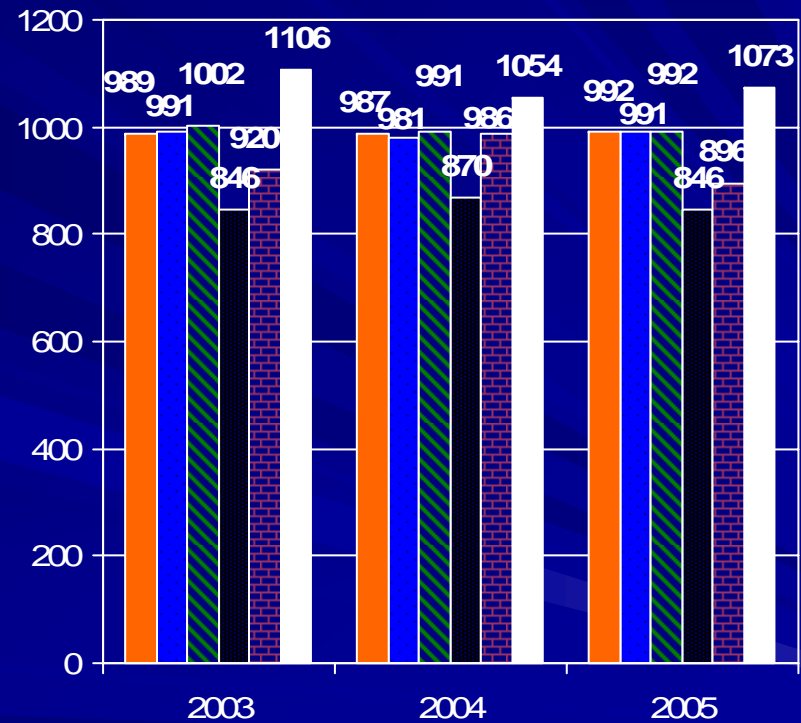
# Mean SAT and ACT Scores

Mean ACT Scores



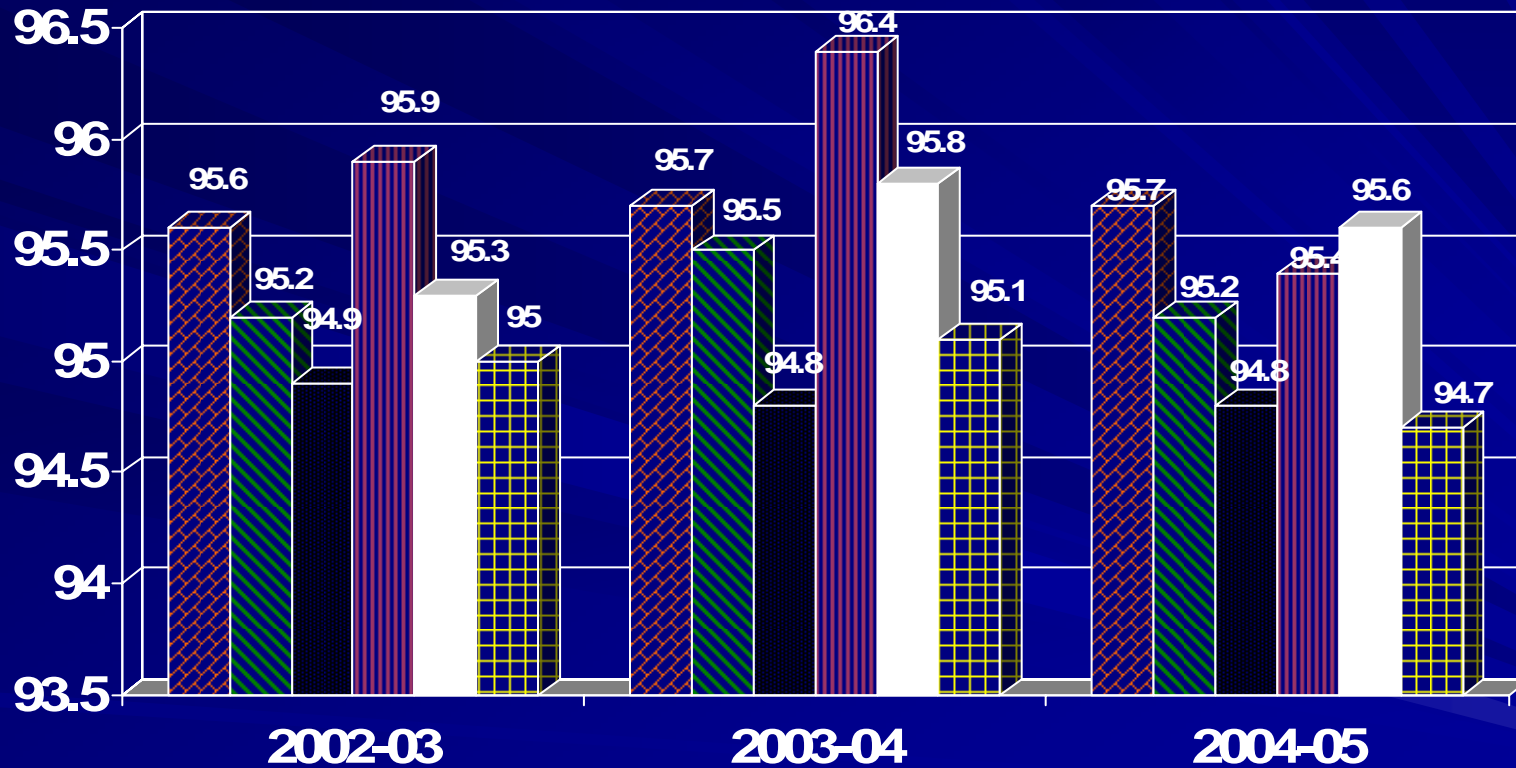
State Region District Afr. Am. Hispanic White

Mean SAT Scores



State Region District Afr. Am. Hispanic White

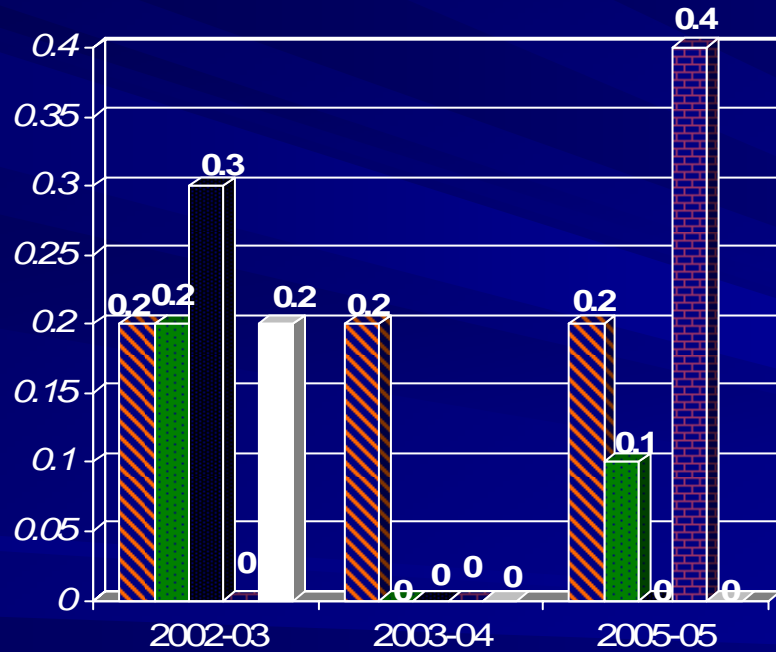
# Attendance Rate



State District Afr. Am. Hispanic White Eco. Dis.

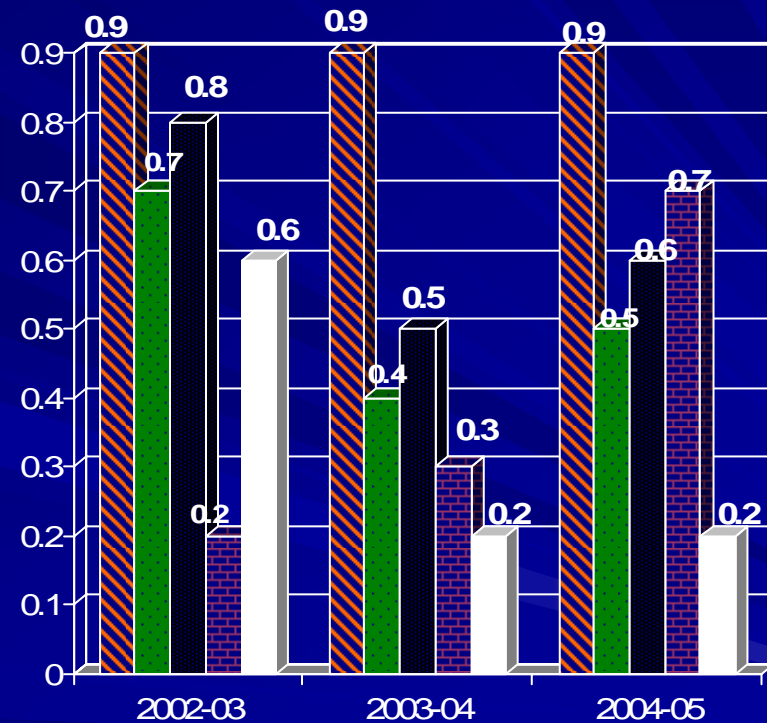
# Drop Out Rate Grades 7-12

## Standard Accountability (Gr. 7-8)



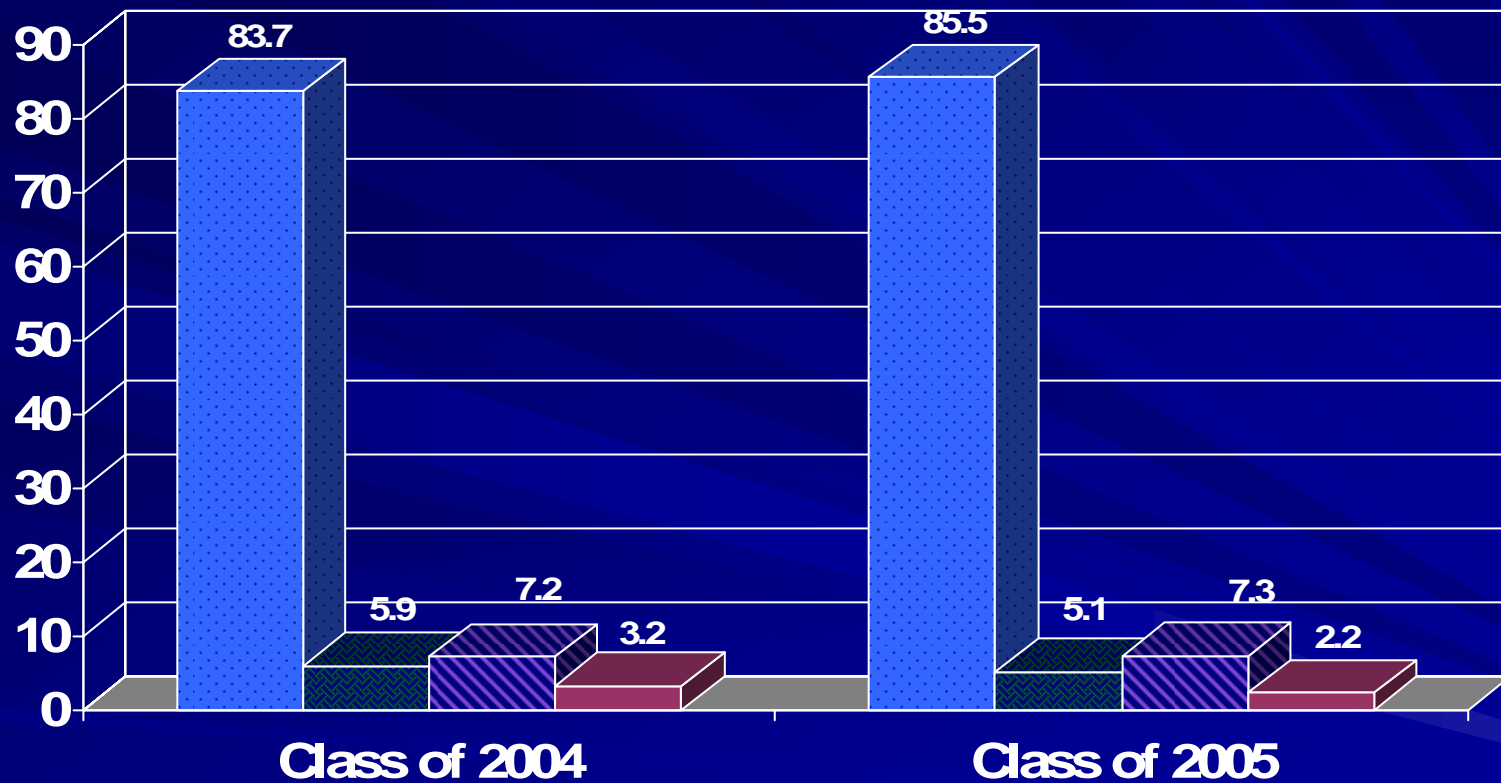
State District Afr. Am. Hispanic White

## AEA Indicator (Gr. 7-12)



State District Afr. Am. Hispanic White

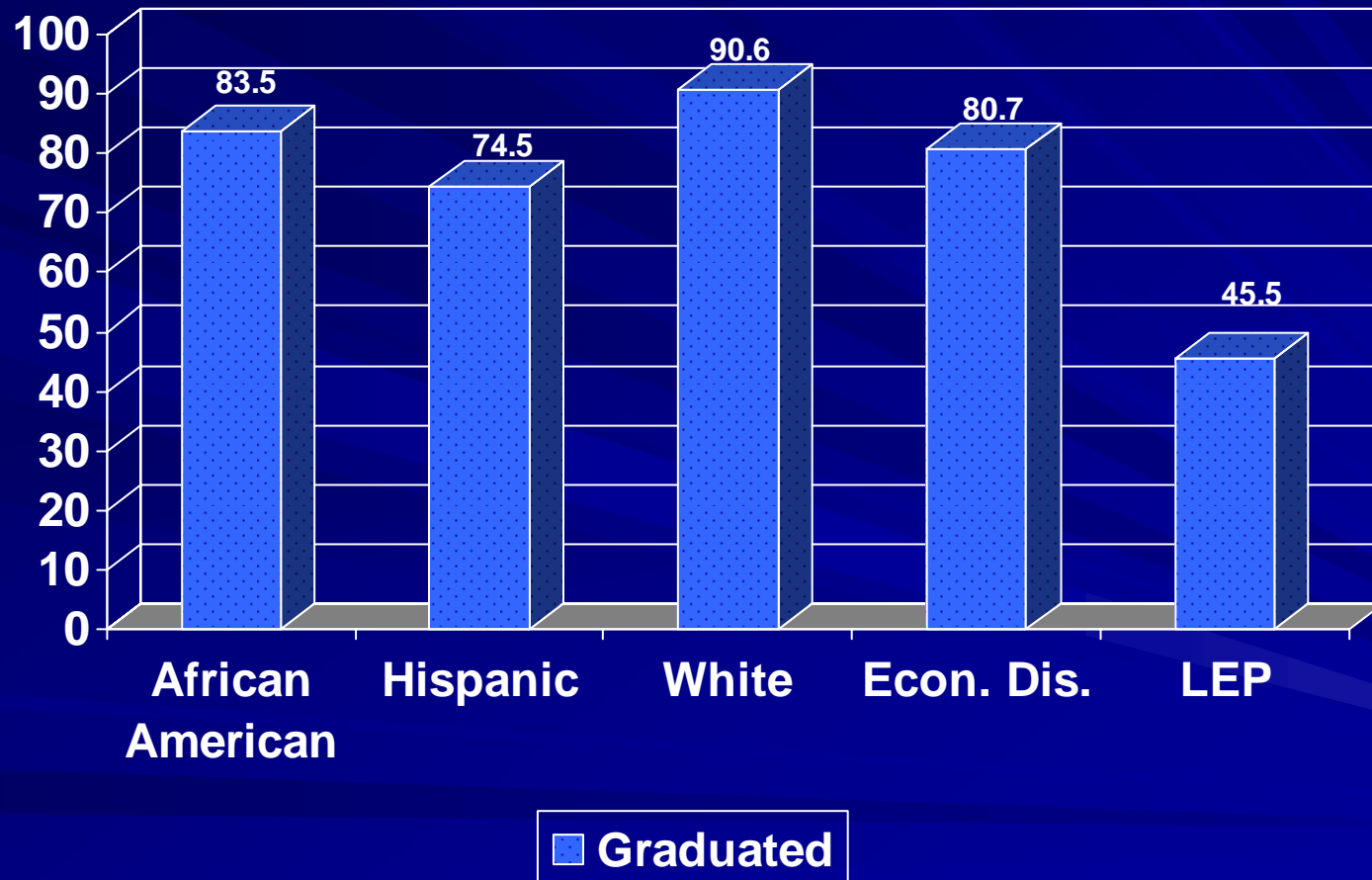
# District Completion Rate /Student Status (Gr. 9-12)



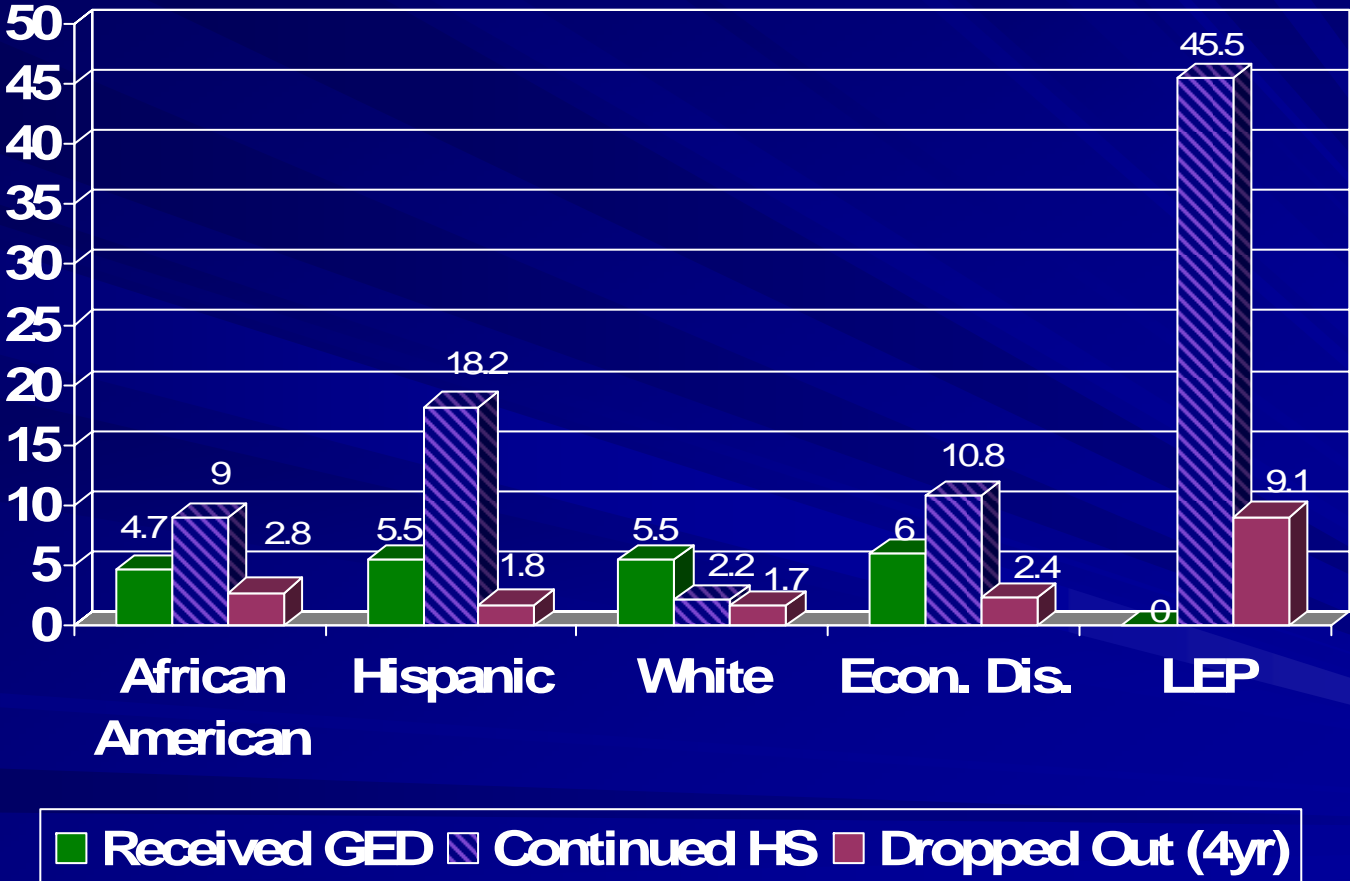
■ Graduated ■ Received GED ■ Continued HS ■ Dropped Out (4yr)



# District Class of 2005 "Graduated" by Ethnicity

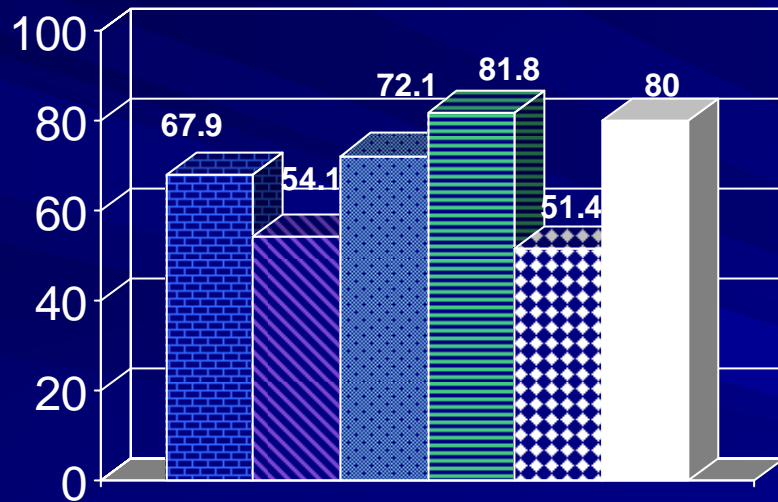


# District Class of 2005 Completion Rate /Student Status (Gr. 9-12) by Ethnicity

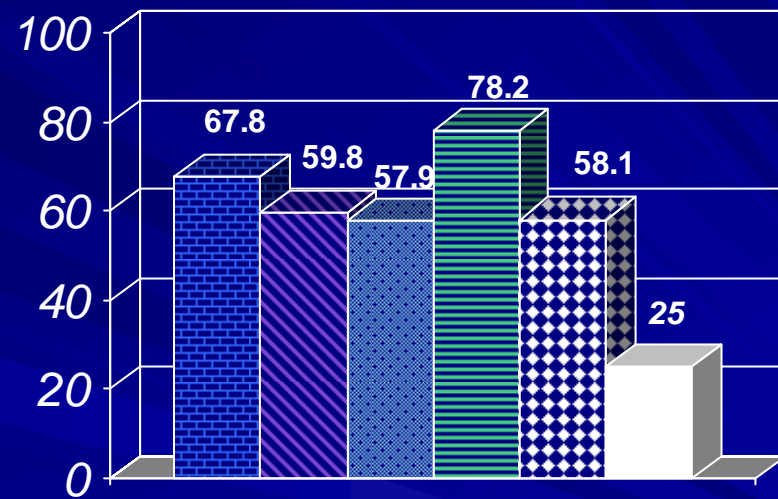


# RHSP / DAP

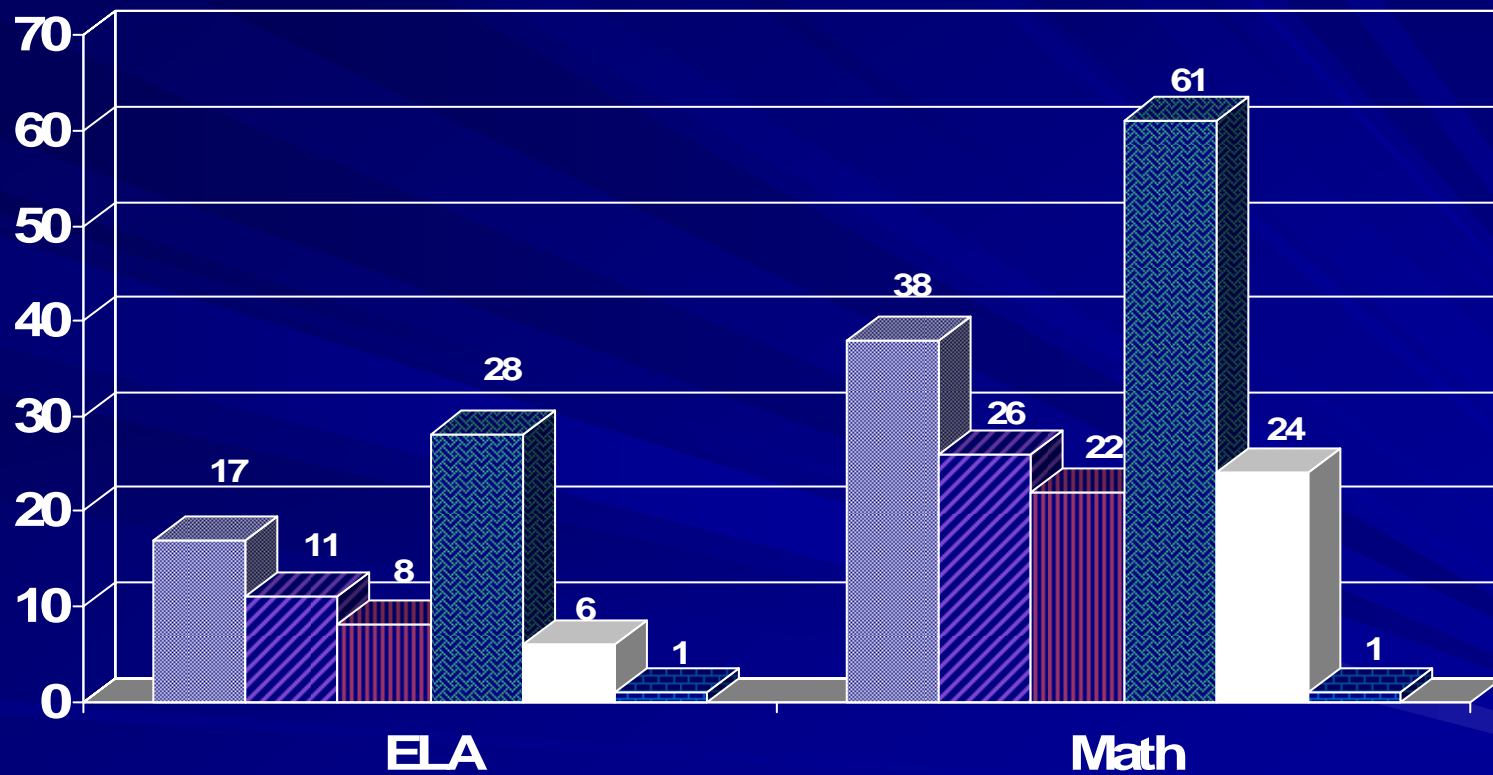
Class of 2005



Class of 2004

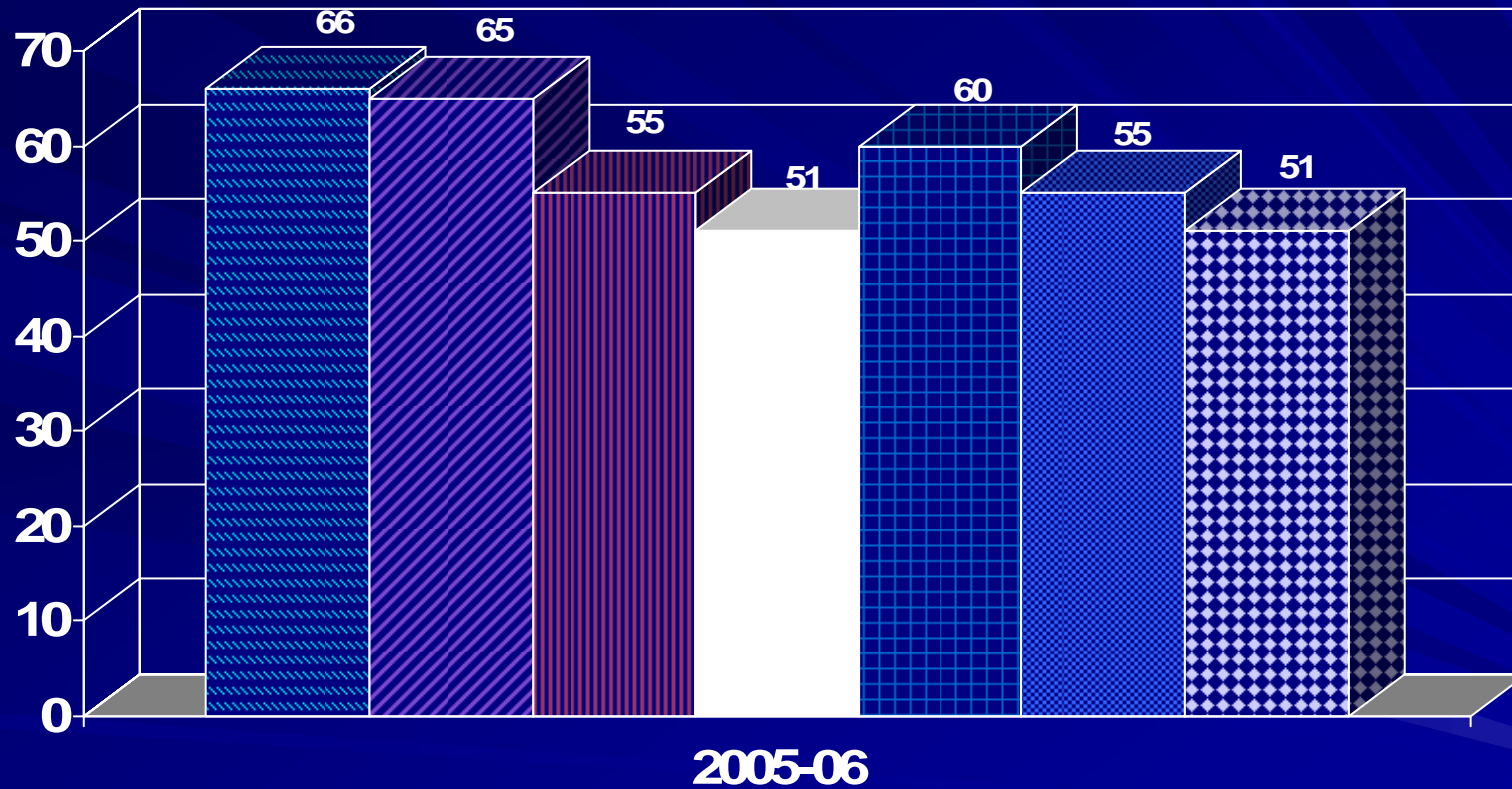


# Texas Higher Readiness Component Grade 11 ELA and Math



□ District   ▨ Afr. Am   ▤ Hispanic   ▩ White   ■ Econ. Dis.   ▨ LEP

# English Language Learners Progress Measure



■ State ■ Region ■ District ■ Male ■ Female ■ Econ. Dis. ■ LEP

# STAFF INFORMATION

	State Percent	Longview Count	Longview Percent
<b>Total</b>		<b>1,211.9</b>	<b>100</b>
<b>Professional Staff</b>	<b>62.5</b>	<b>733.0</b>	<b>60.5</b>
<b>Teachers</b>	<b>50.7</b>	<b>566.9</b>	<b>46.8</b>
<b>Professional Support</b>	<b>8.0</b>	<b>117.3</b>	<b>9.7</b>
<b>Campus Admin</b>	<b>2.8</b>	<b>29.8</b>	<b>2.5</b>
<b>Central Admin</b>	<b>1.0</b>	<b>19.0</b>	<b>1.6</b>
<b>Educational Aides</b>	<b>10.2</b>	<b>133.2</b>	<b>11.0</b>
<b>Auxiliary Staff</b>	<b>27.3</b>	<b>345.7</b>	<b>28.5</b>

# STAFF INFORMATION

	State	Longview
<b>Number of Students per Teacher</b>	14.9	14.8
<b>Average Years Experience of Teachers</b>	11.5	13.2
<b>Average years Experience of Teachers with District</b>	7.6	7.5
<b>Turnover Rate for Teachers</b>	14.6	17.0

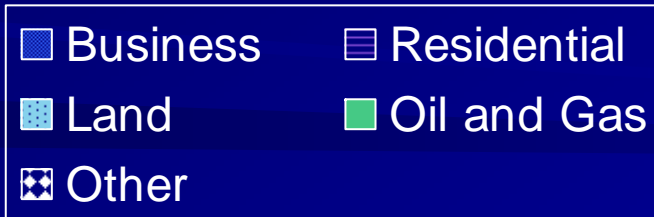
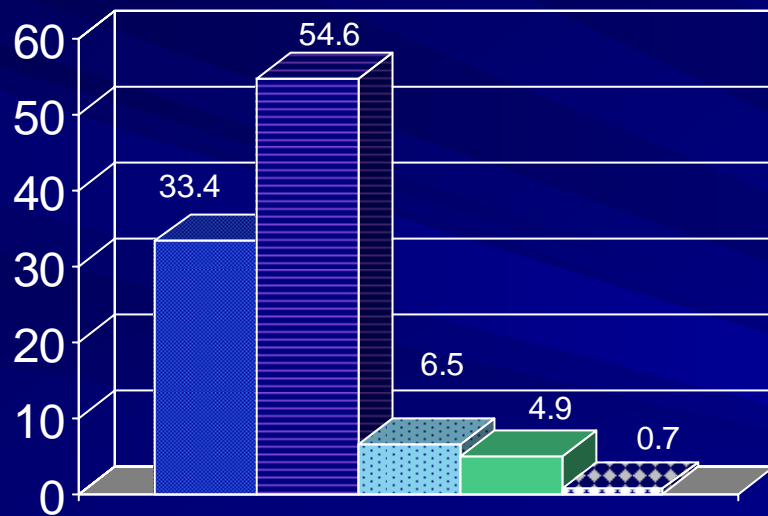


# AVERAGE TEACHER SALARY BY YEARS OF EXPERIENCE

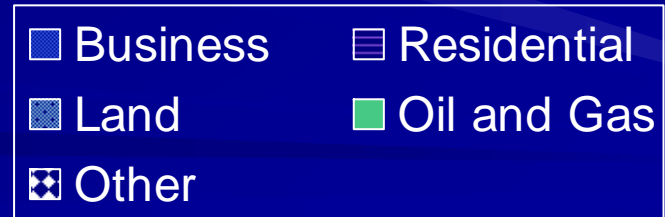
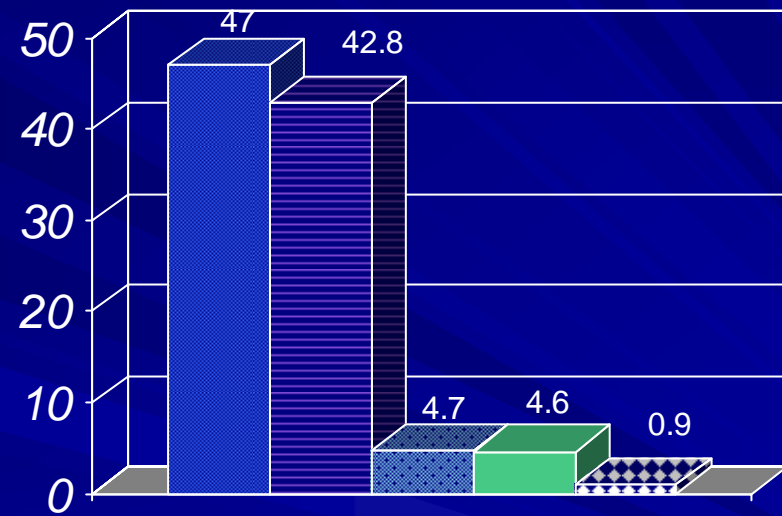
2005-2006	State	%	Longview	%
Beginning	\$ 34,505	7.5	\$31,739	4.8
1-5 Years	\$36,567	29	\$32,407	23.7
6-10 years	\$ 39,008	19.4	\$ 34,963	17.3
11-20 Years	\$ 43,978	24.2	\$ 41,184	30
Over 20 Years	\$ 51,998	19.9	\$ 47,366	24.2

# Property Values by Category

State



District



# ACTUAL PER PUPIL REVENUES 2004-2005

By source	State	%	Longview	%
<b>Total Revenue (All funds)</b>	<b>\$ 8,439</b>	<b>100</b>	<b>8,524</b>	<b>100</b>
<b>Local Tax</b>	<b>\$ 4,014</b>	<b>48.1</b>	<b>\$ 5,123</b>	<b>60.1</b>
<b>Other local &amp; Intermediate</b>	<b>\$ 443</b>	<b>5.3</b>	<b>\$ 409</b>	<b>4.8</b>
<b>State</b>	<b>\$ 3,004</b>	<b>36</b>	<b>\$ 1,637</b>	<b>19.2</b>
<b>Federal</b>	<b>\$ 889</b>	<b>10.7</b>	<b>\$ 1,356</b>	<b>15.9</b>

# Per Pupil Expenditures 2004-2005

<b>By object</b>	<b>State</b>	<b>%</b>	<b>Longview</b>	<b>%</b>
<b>Total Expenditures</b>	<b>\$ 9,269</b>	<b>100</b>	<b>\$ 7,946</b>	<b>100</b>
<b>Payroll</b>	<b>\$ 5,800</b>	<b>62.6</b>	<b>\$ 5,784</b>	<b>72.8</b>
<b>Other operating</b>	<b>\$ 1,532</b>	<b>16.5</b>	<b>\$ 1,508</b>	<b>19.0</b>
<b>Debt Service</b>	<b>\$ 744</b>	<b>8.0</b>	<b>\$ 394</b>	<b>5.0</b>
<b>Capital outlay</b>	<b>\$ 1,193</b>	<b>12.9</b>	<b>\$ 260</b>	<b>3.3</b>

# FUND BALANCE

	State 2004-05	Longview 2004-05
<b>Percent of Total Budgeted Expenditures</b>	<b>16.8%</b>	<b>22.5%</b> <b>11.5 Million</b>
<b>Current fund balance (Dec. 2006) approximately 16 million.</b>		